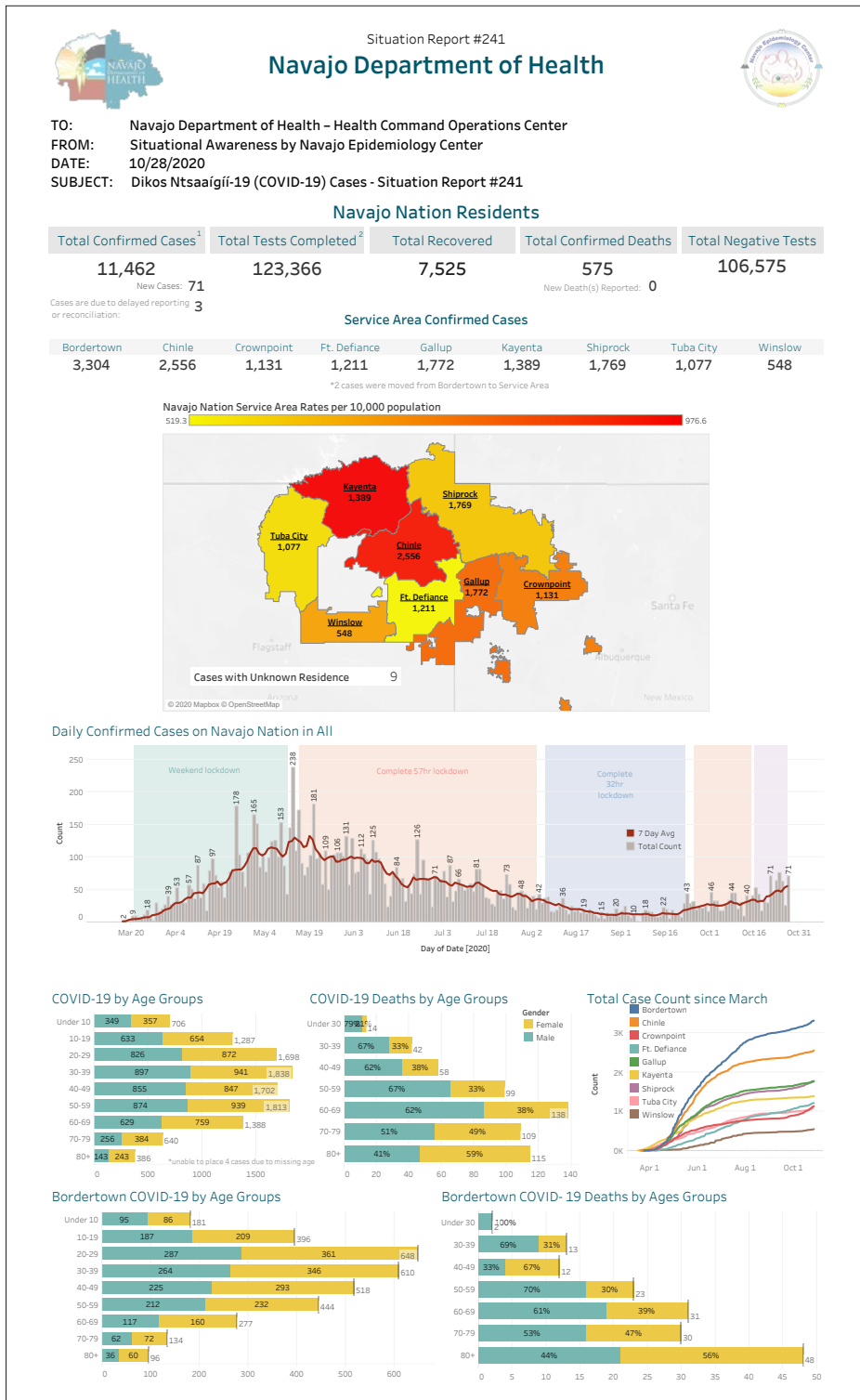


DIKOS NTSAAÍGÍÍ (COVID-19) UPDATE Navajo Epidemiology Center

Helping with Making Data-driven Decisions for the COVID-19 response



NEC hosts CDC Epi-Aid team to assist with COVID-19 surveillance and case tracking systems for better disease characterization.

The Navajo Epidemiology Center (NEC) is playing a critical role in assisting with making data-driven decisions by collecting and analyzing data, and using them to develop appropriate strategies and activities for COVID-19 response on the Navajo Nation. NEC is working with partners (tribal programs, IHS, 638 tribal organizations, state health departments, academic institutions, non-profit programs, and CDC), to conduct COVID-19 disease surveillance, perform contact tracing, and manage the data to help with data visualization. NEC also shares its daily COVID-19 situational awareness reports with leaders, partners and general public to help with making informed decisions. Additional information can be found at: www.ndoh.navajo-nsn.gov/COVID-19.

What is epidemiology?

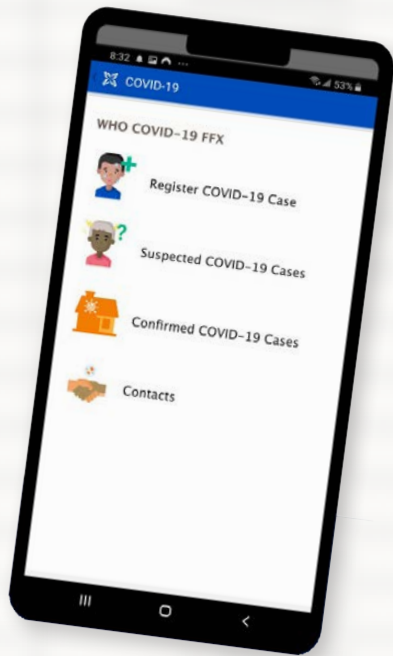
Epidemiology (*Naalniih Naalkaah*) is the study of disease in populations. It observes patterns by 'person, place and time', and attempts to answer the questions 'Who?', 'What?', 'Where?' and 'When?'. NEC collects information to learn who got sick, when they got sick, who might get sick, and where they reside on the Navajo Nation. This information helps protect the residents of Navajo Nation.

NEC and partners developed a COVID-19 dashboard to communicate data visually. The dashboard can be accessed at: <https://www.ndoh.navajo-nsn.gov/COVID-19/Data>

Contact us:
Tel. 928/871-6539
Website: www.nec.navajo-nsn.gov
Email: navajoepi@navajo-nsn.gov



NEC Director Ramona Antone-Nez meeting with IHS and CDC partners to conduct contact tracing using CommCare mobile application.



COVID-19 CONTACT TRACING

NEC and partners implement CommCare application to conduct COVID-19 contact tracing. Contact tracing is the process of identification of persons who may have come into contact with an infected person (“contacts”) and subsequent collection of further information about these contacts. By tracing the contacts of infected individuals, testing them for infection, treating the infected and tracing their contacts in turn, public health aims to reduce infections on the Navajo Nation.



COVID-19 DATA FLOW AND SURVEILLANCE

NEC meets with partners to evaluate current COVID-19 data flow and assist with improving surveillance and case tracking systems that will allow better characterization of disease severity, case fatality, testing, hospitalization, patient outcomes, and household transmission.

